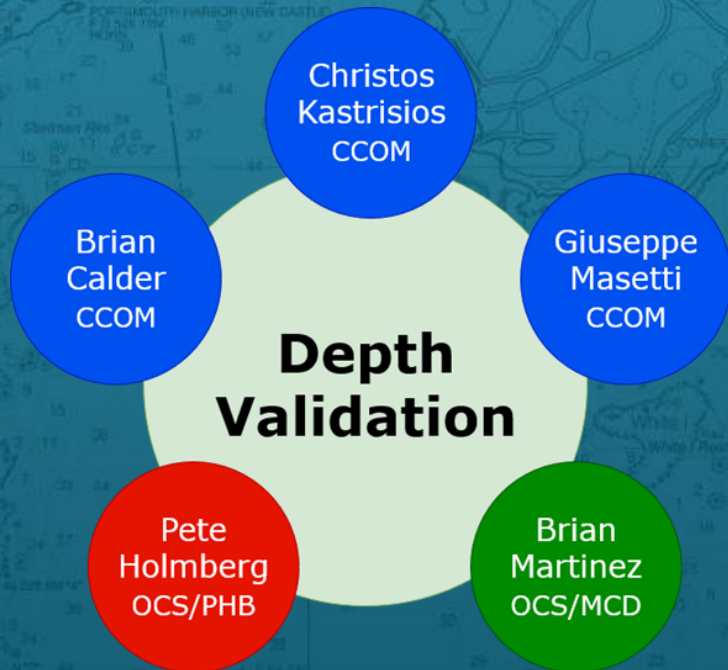




Canadian Hydrographic Conference

Quebec City, Feb. 24-27, 2020



Soundings Validation Toolbox

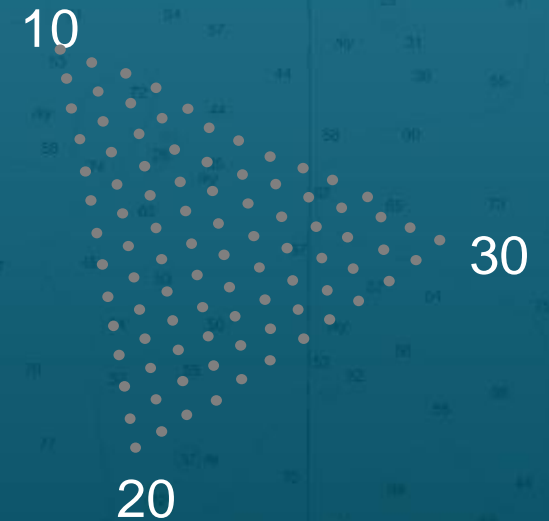
Research to Operations

Christos Kastrisios
February 26, 2020

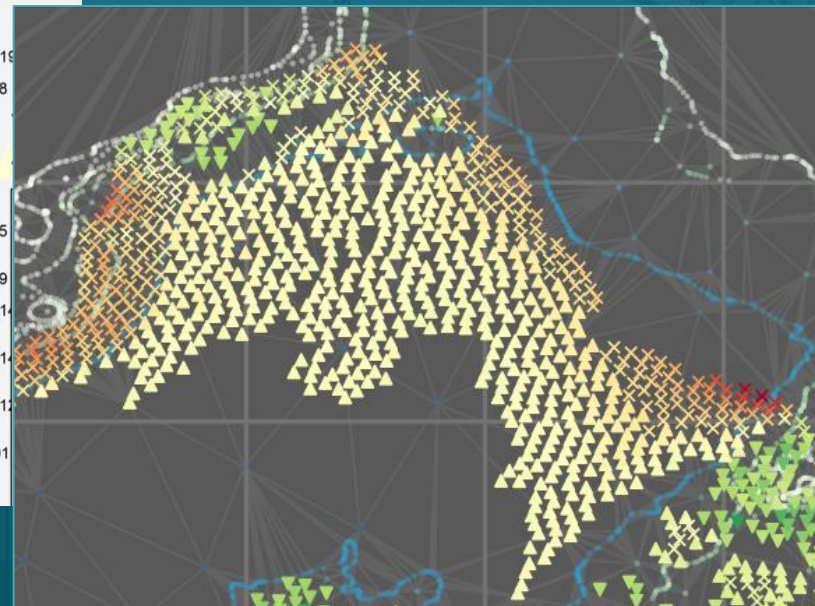
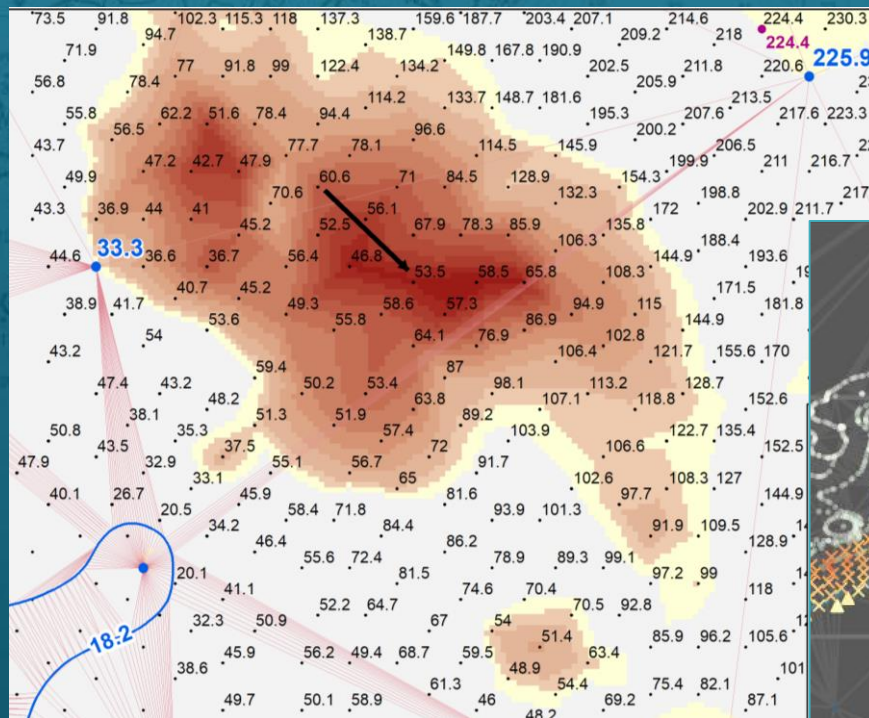
"Safety"

Depth curves

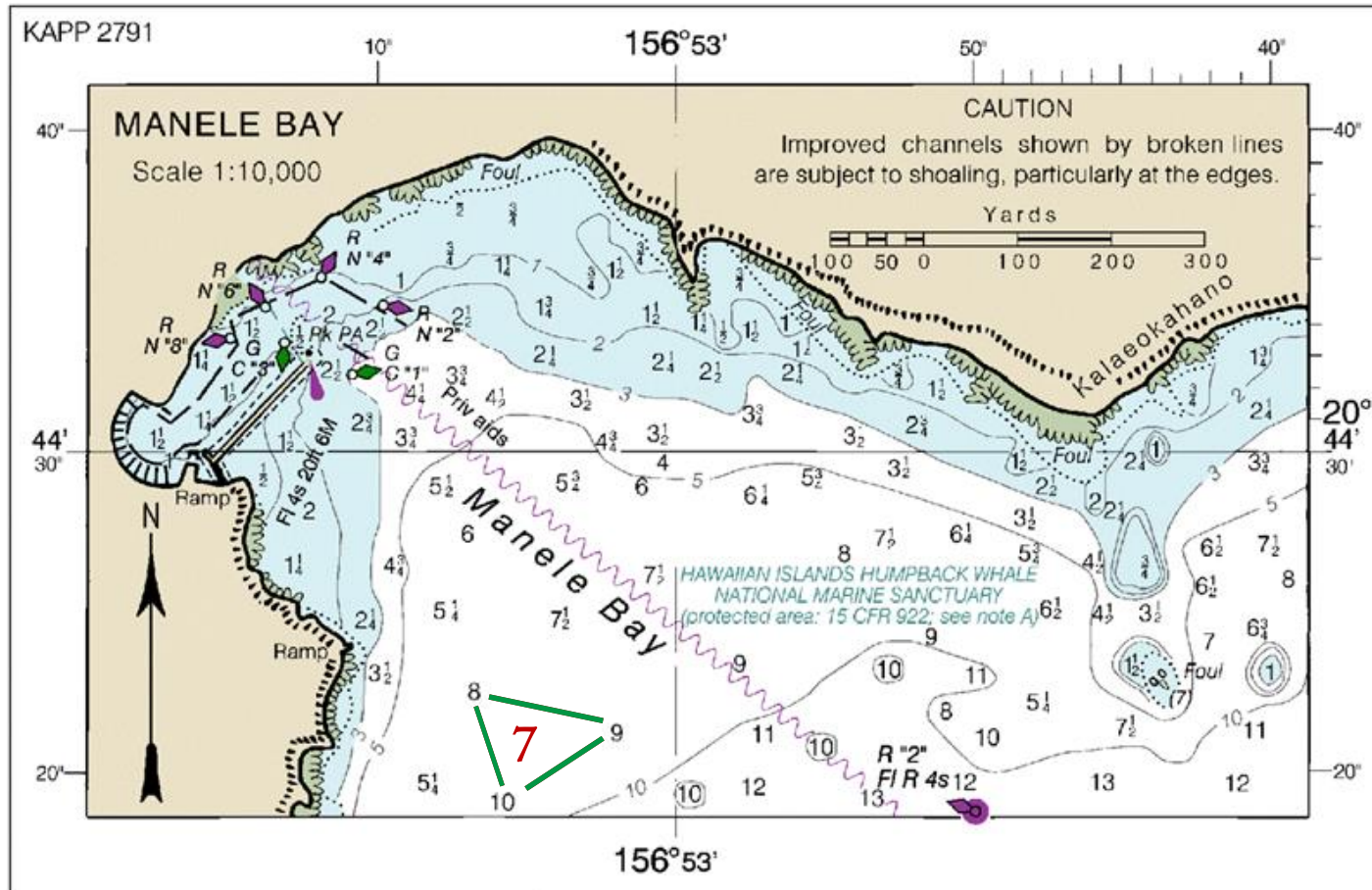
Soundings



"Safety"



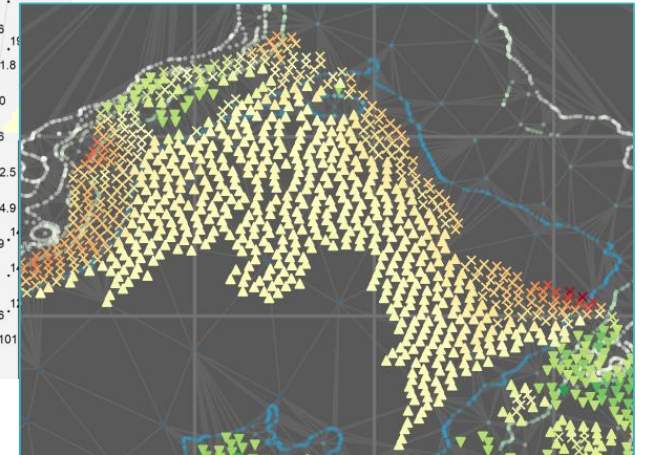
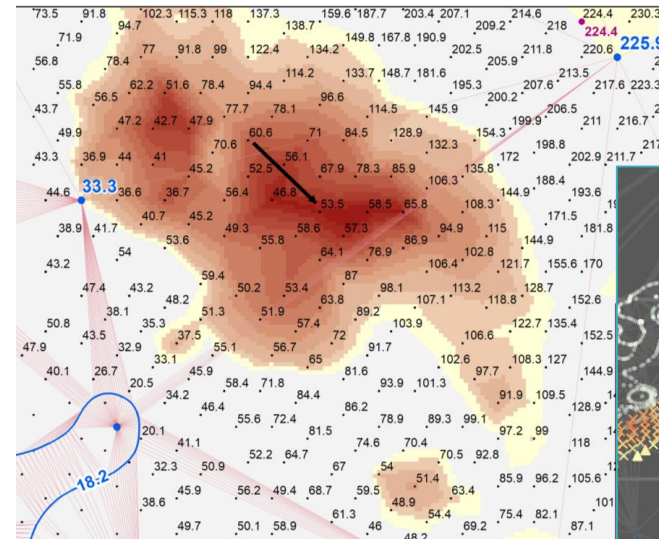
SAFETY CONSTRAINT



SCOPE



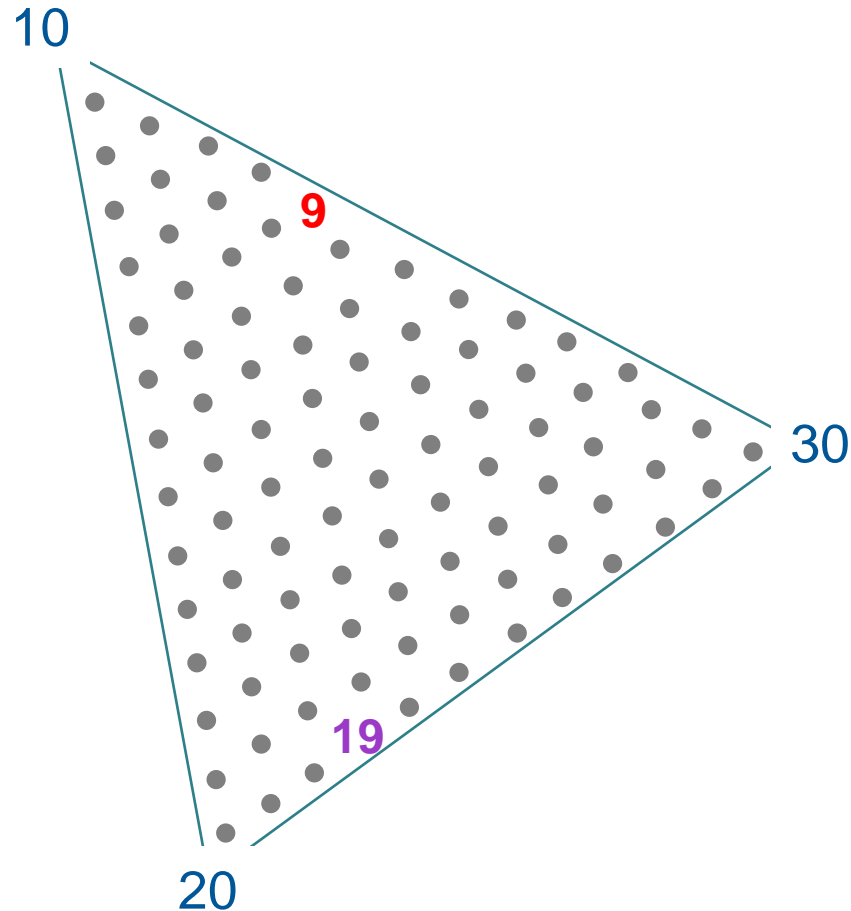
Automate sounding validation



"Triangle test"



"No actual sounding exists within a triangle of selected soundings which is less than the least of any of the soundings forming the triangle"



"Edge test"

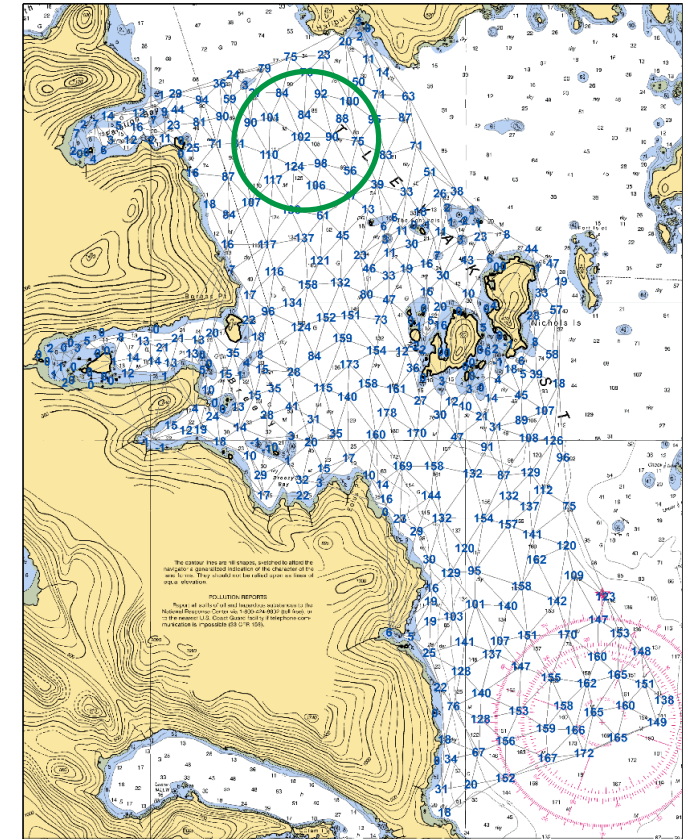


"No actual sounding exists between two adjacent selected soundings forming an edge of the triangle which is less than the lesser of the two selected soundings"

TRIANGLE & EDGE TESTS

➔ TT and ET implementation

- S-4: Network of triangles from selected soundings

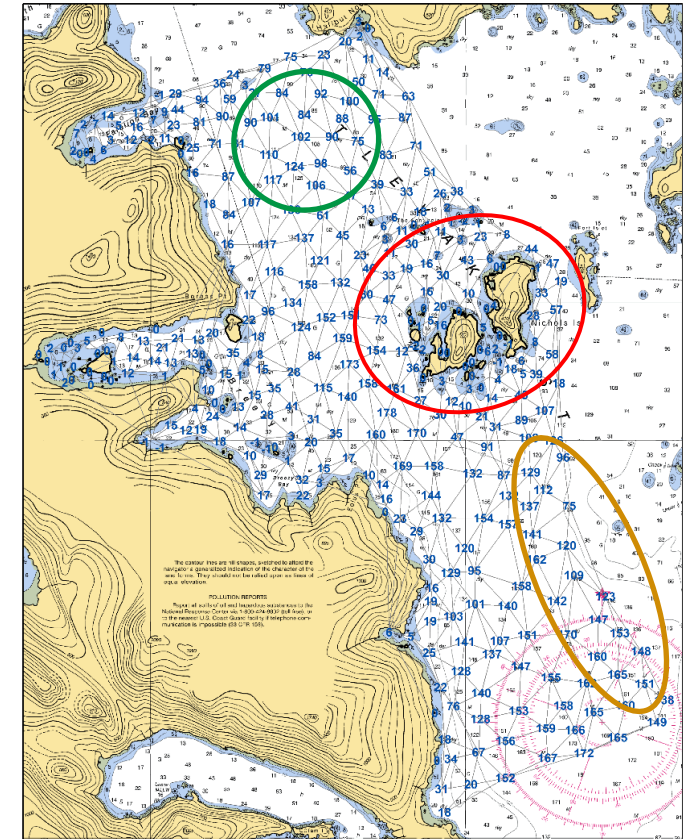


TRIANGLE & EDGE TESTS

➔ ~~TT and ET implementation~~

➔ Modified TT and ET

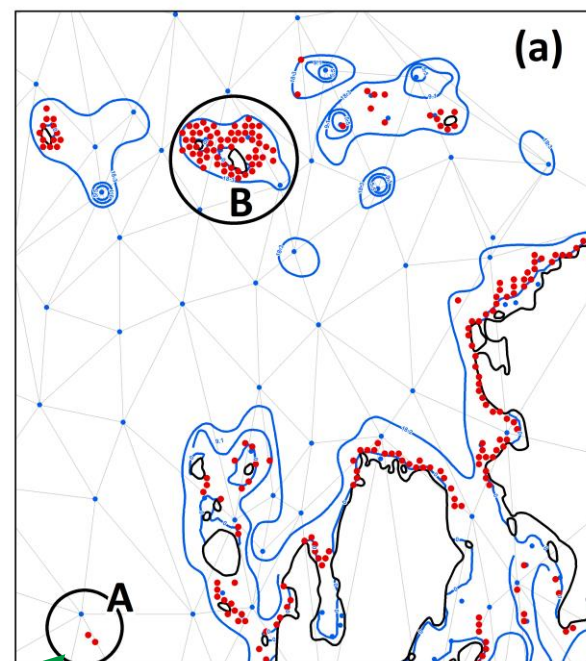
- S-4: Network of triangles from selected soundings
- Practice:
 - Open areas:
Triangles from selected soundings
 - Near and within linear features:
Areas of dominance
 - Near the boundaries of the updated area:
“Incorporate” bathymetry from “Chart Interface”



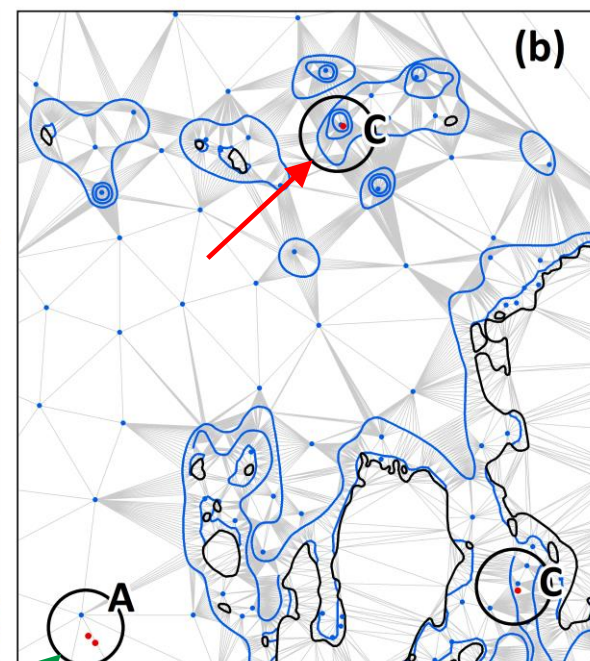
TRIANGLE & EDGE TESTS

→ ~~TT and ET implementation~~

→ Modified TT and ET



Triangle Test

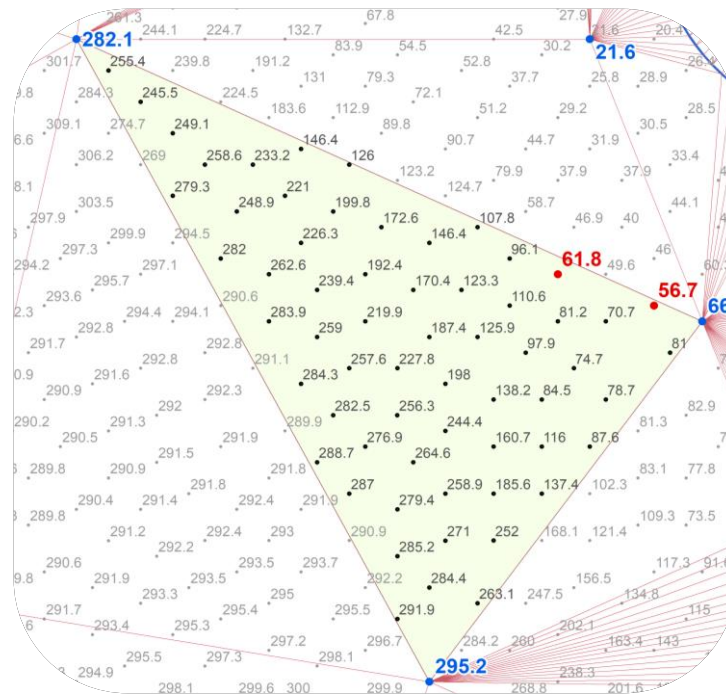


Modified Triangle Test

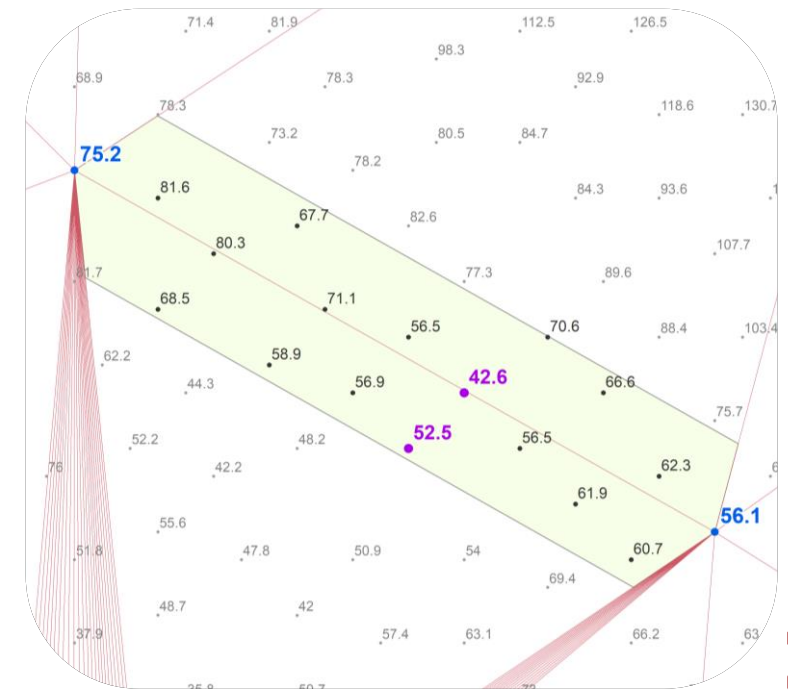
TRIANGLE & EDGE TESTS

➡ ~~TT and ET implementation~~

✓ Modified TT and ET



TT



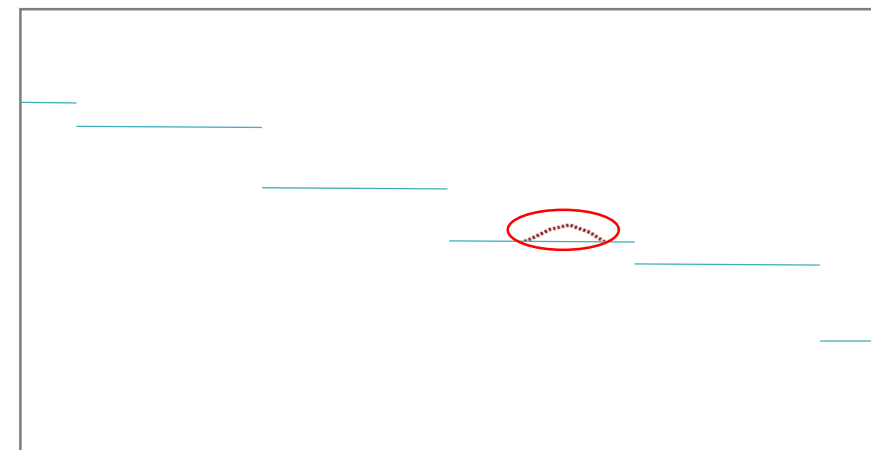
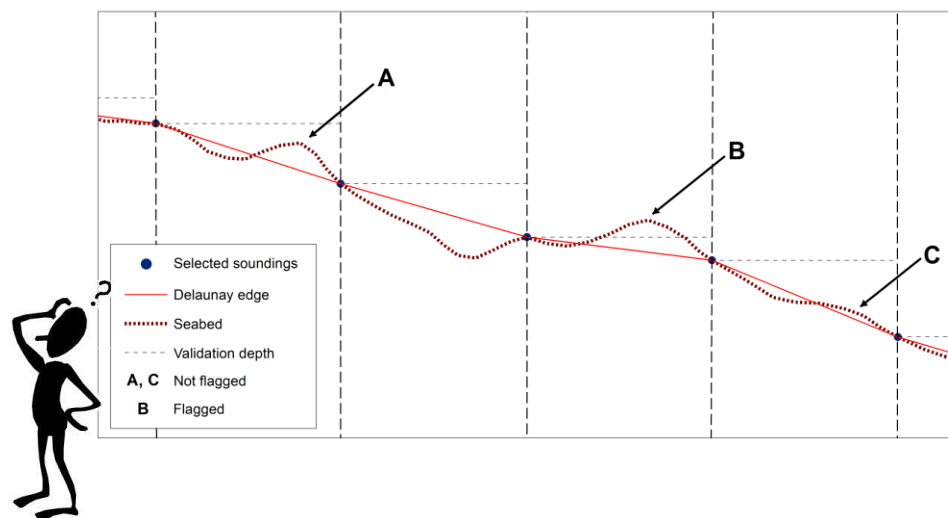
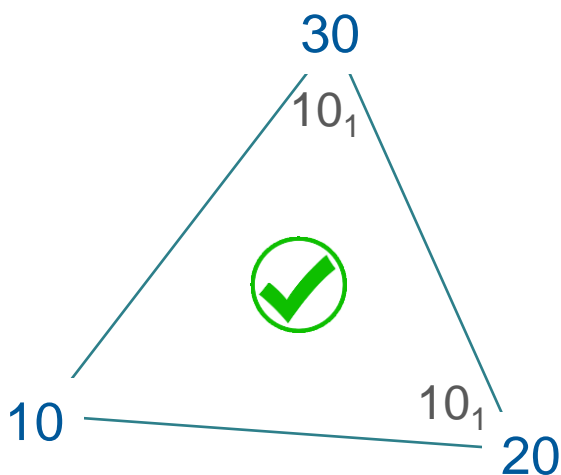
ET

INTRINSIC LIMITATION

➡ ~~TT and ET implementation~~

✓ Modified TT and ET

➡ TT and ET limitation

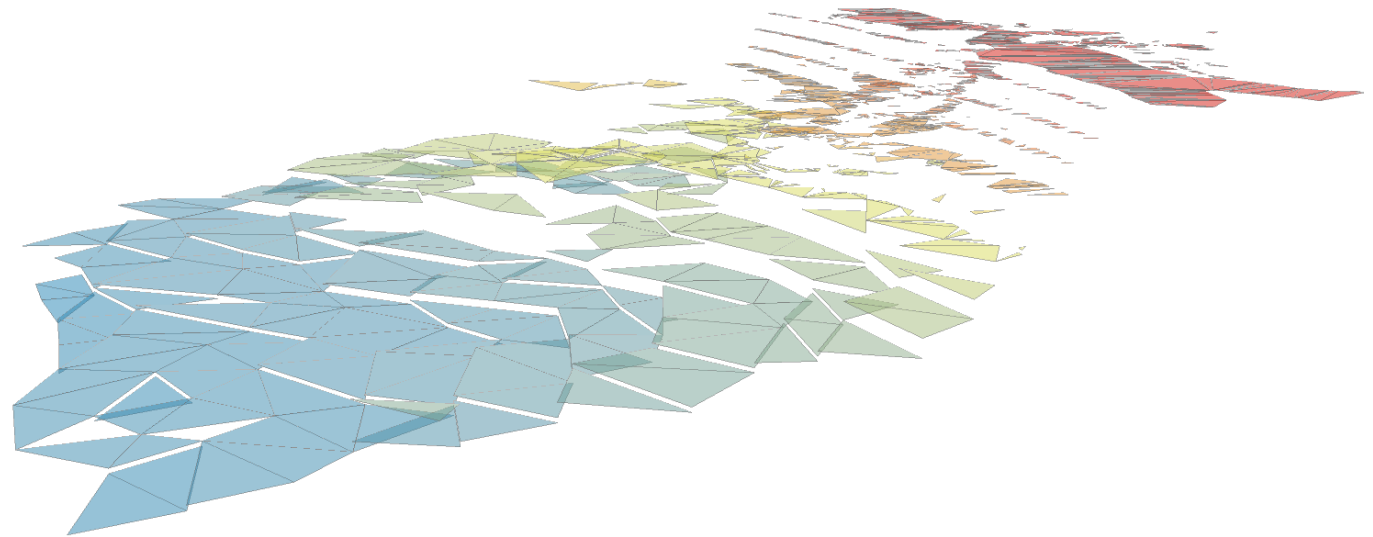


INTRINSIC LIMITATION

→ ~~TT and ET implementation~~

✓ Modified TT and ET

→ TT and ET limitation

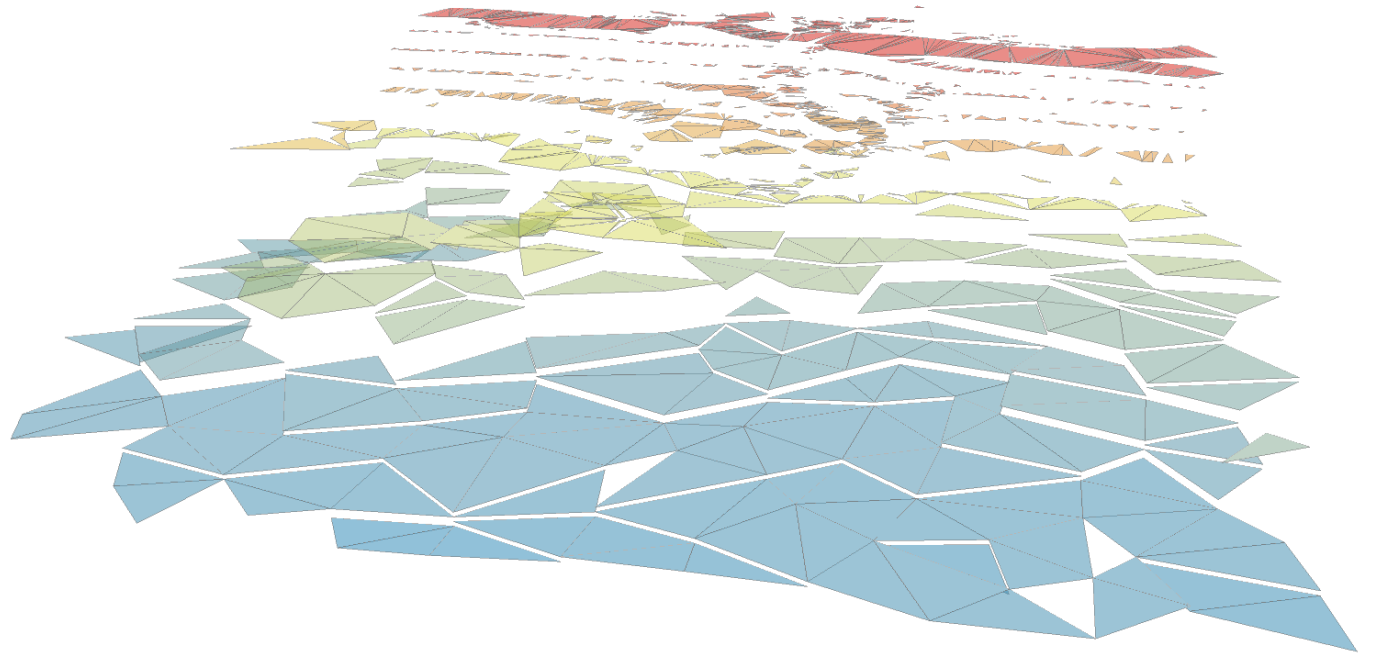


INTRINSIC LIMITATION

➡ ~~TT and ET implementation~~

✓ Modified TT and ET

➡ TT and ET limitation

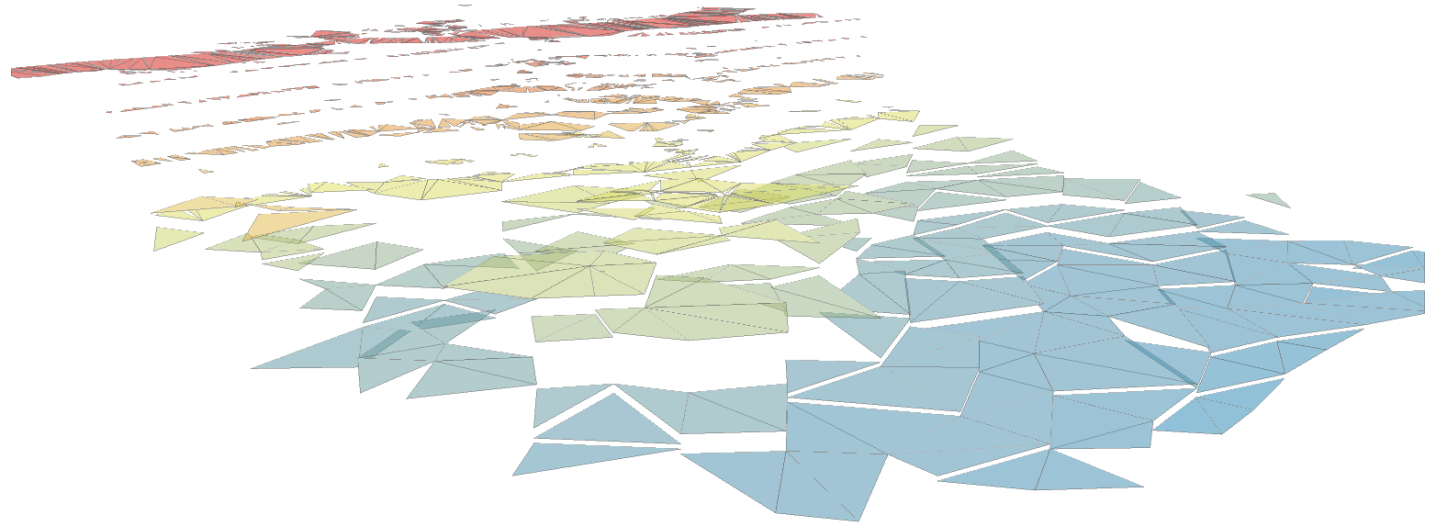


INTRINSIC LIMITATION

➡ ~~TT and ET implementation~~

✓ Modified TT and ET

➡ TT and ET limitation

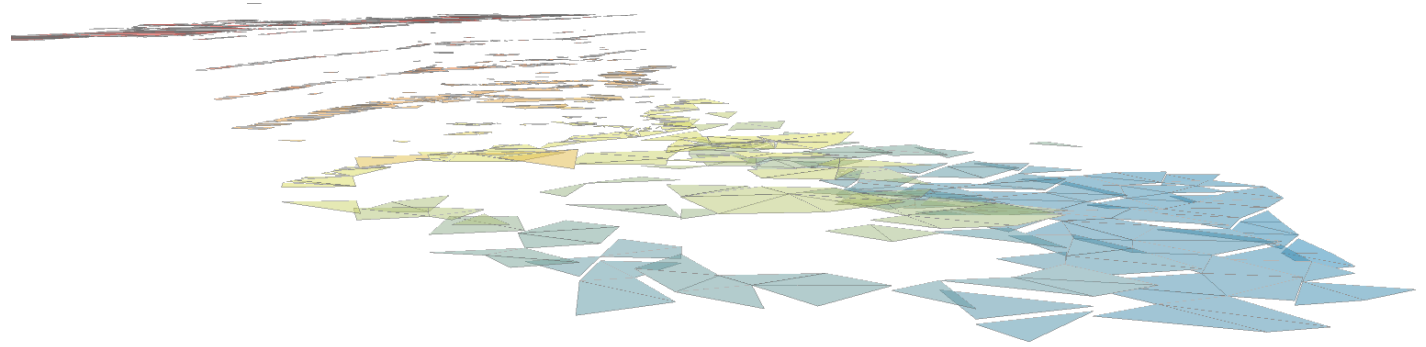


INTRINSIC LIMITATION

➡ ~~TT and ET implementation~~

✓ Modified TT and ET

➡ TT and ET limitation

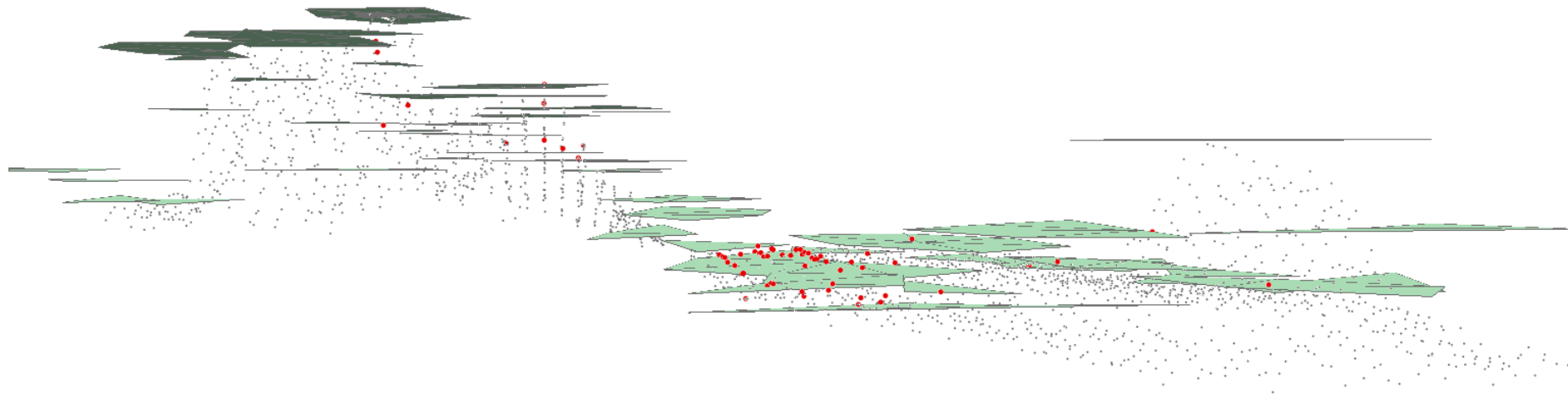


INTRINSIC LIMITATION

→ ~~TT and ET implementation~~

✓ Modified TT and ET

→ TT and ET limitation



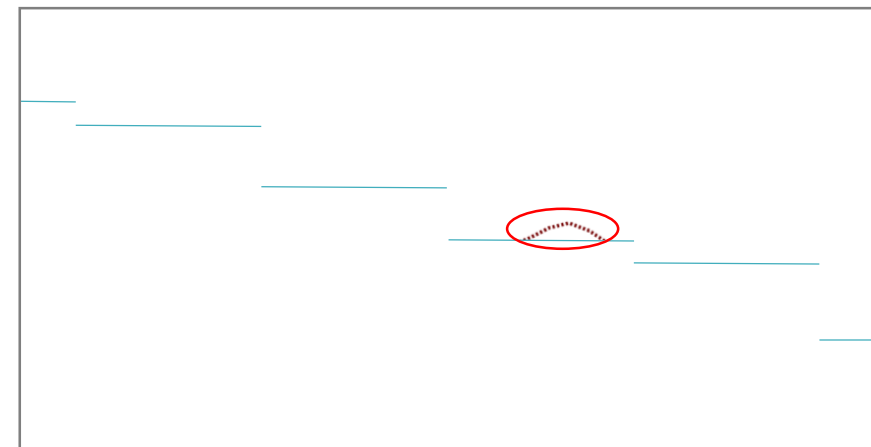
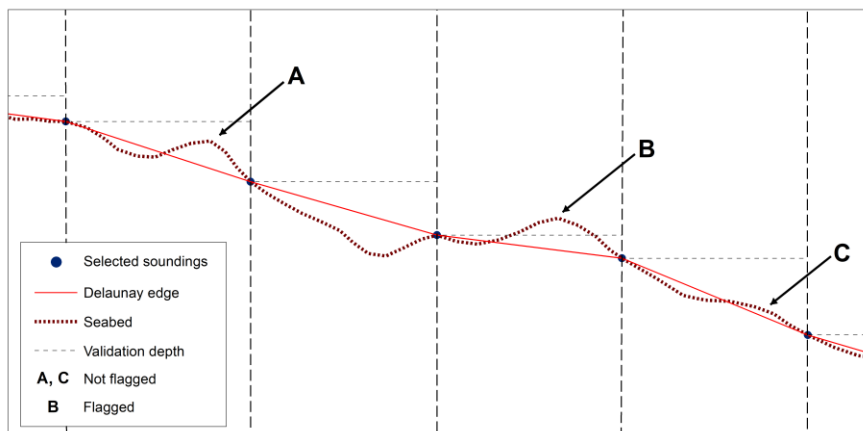
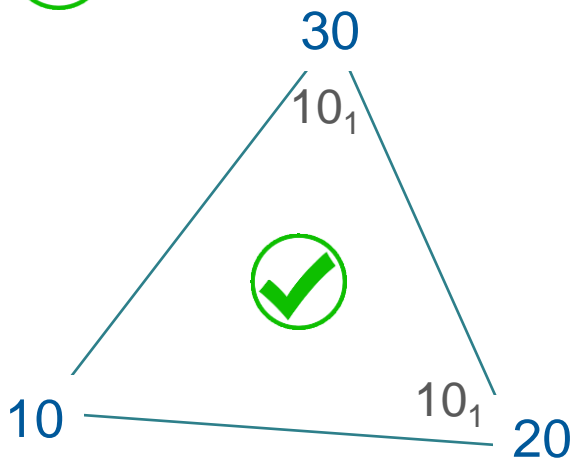
SURFACE TEST

→ ~~TT and ET implementation~~

✓ Modified TT and ET

✓ TT and ET limitation

➔ Nautical Surface Test (ST)



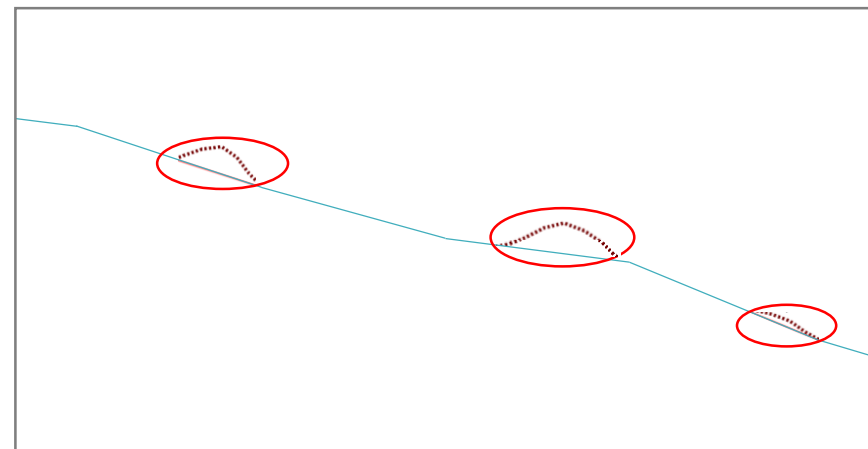
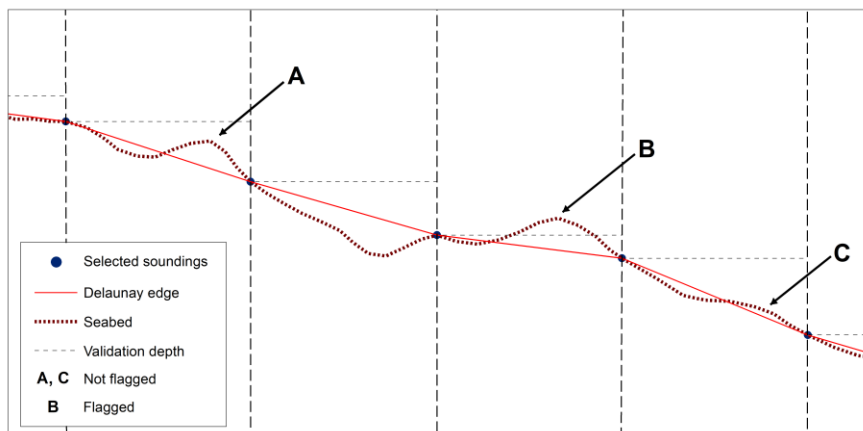
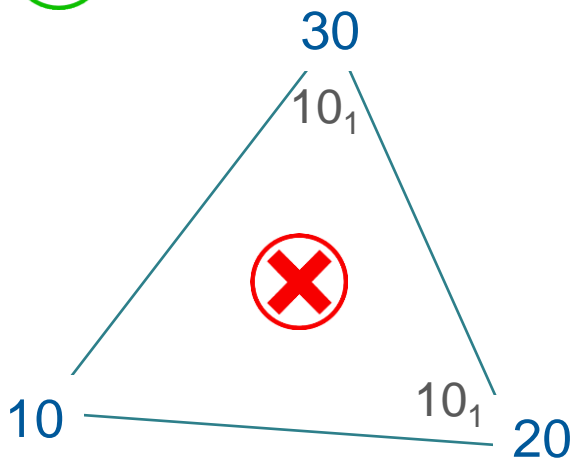
SURFACE TEST

➡ ~~TT and ET implementation~~

✓ Modified TT and ET

✓ TT and ET limitation

➡ Nautical Surface Test (ST)



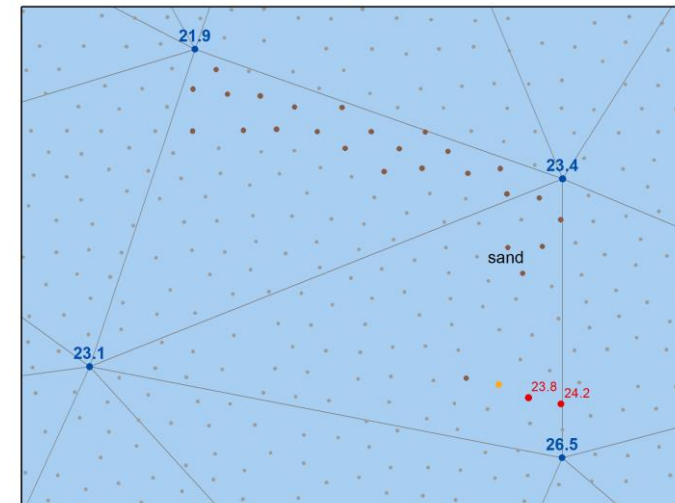
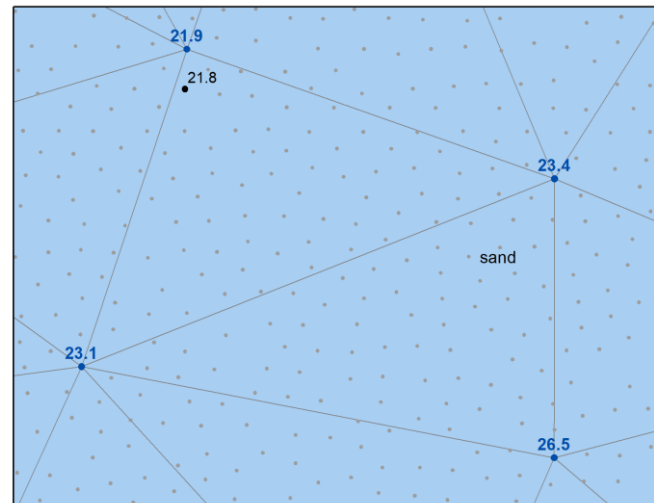
SURFACE TEST

➡ ~~TT and ET implementation~~

✓ Modified TT and ET

✓ TT and ET limitation

➡ Nautical Surface Test (ST)



-

VALIDATION TOOLBOX

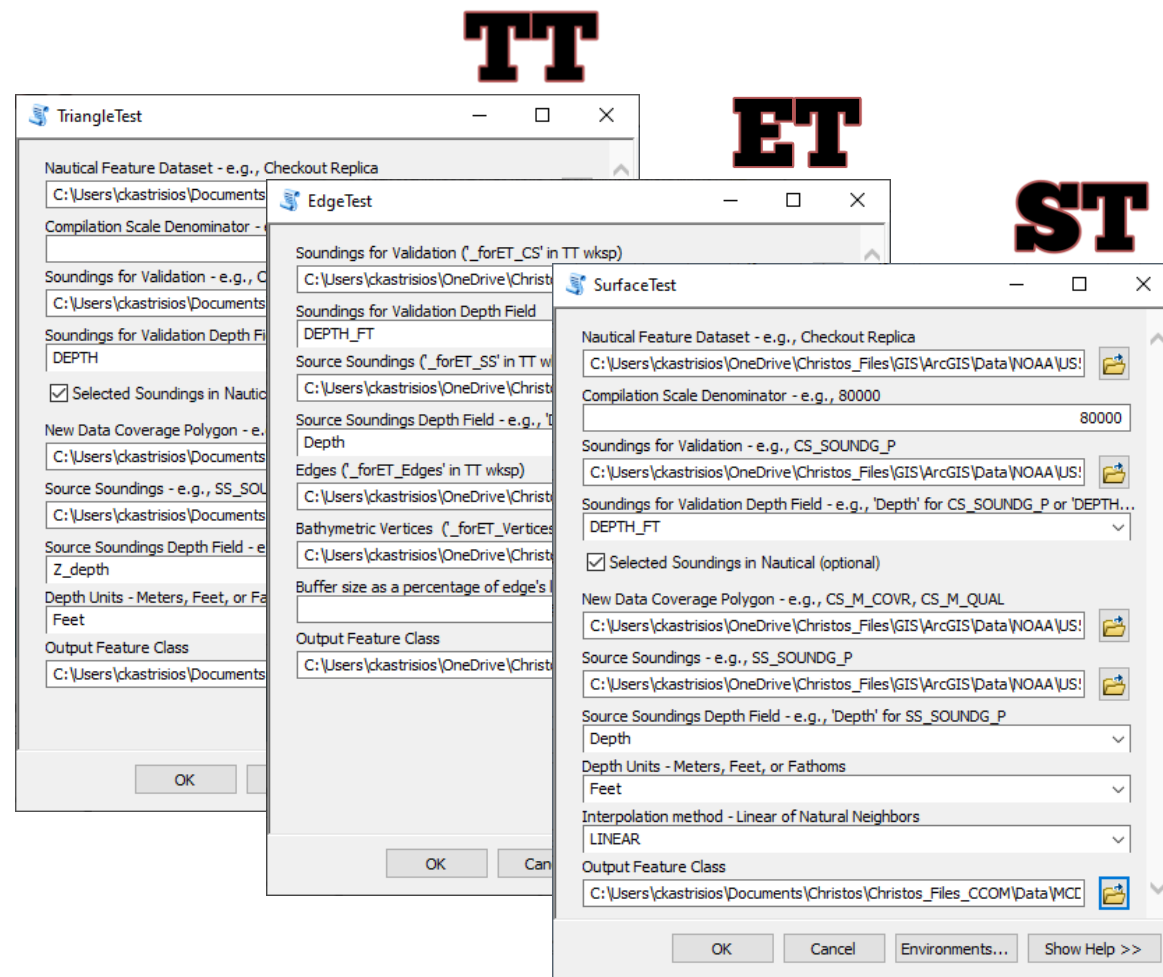
→ ~~TT and ET implementation~~

✓ Modified TT and ET

✓ TT and ET limitation

✓ Nautical Surface Test (ST)

→ TT, ET, ST Toolset



VALIDATION TOOLBOX

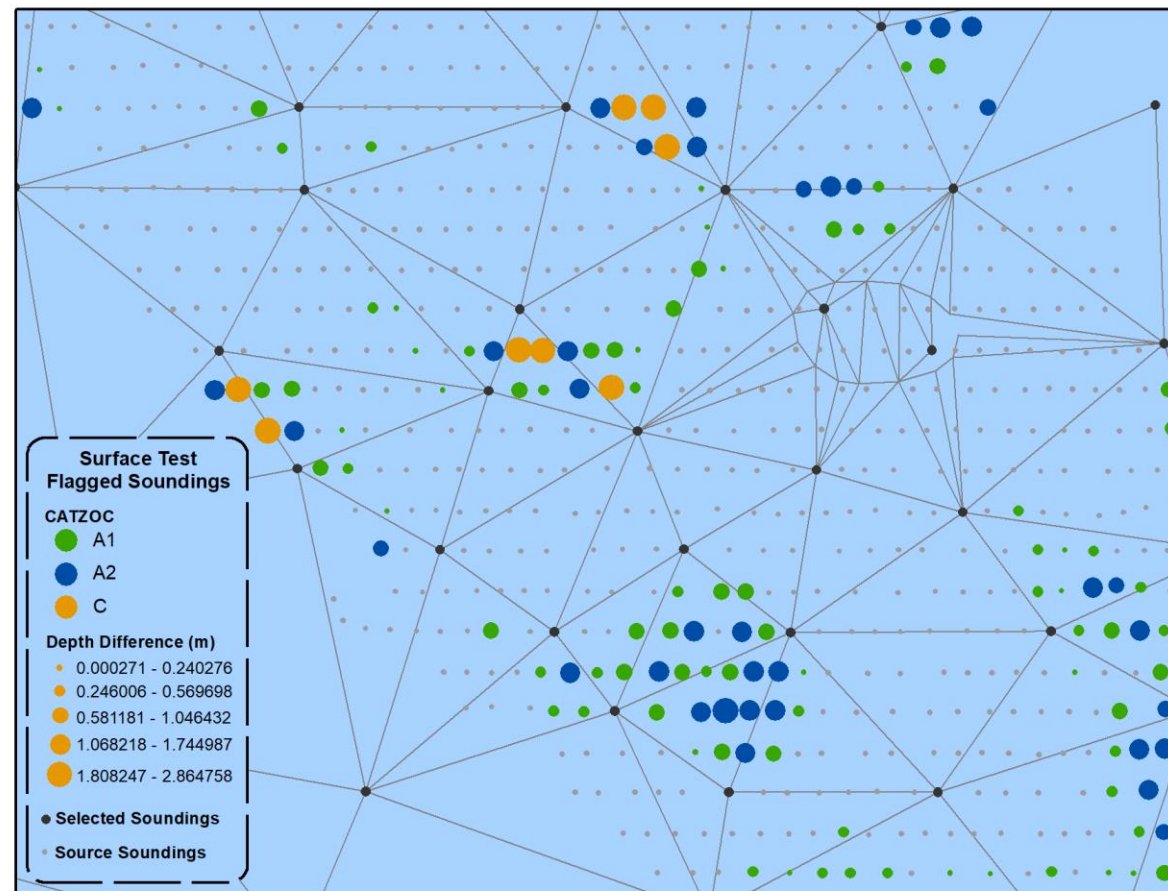
➔ ~~TT and ET implementation~~

✓ Modified TT and ET

✓ TT and ET limitation

✓ Nautical Surface Test (ST)

R20 TT, ET, ST Toolset



VALIDATION TOOLBOX

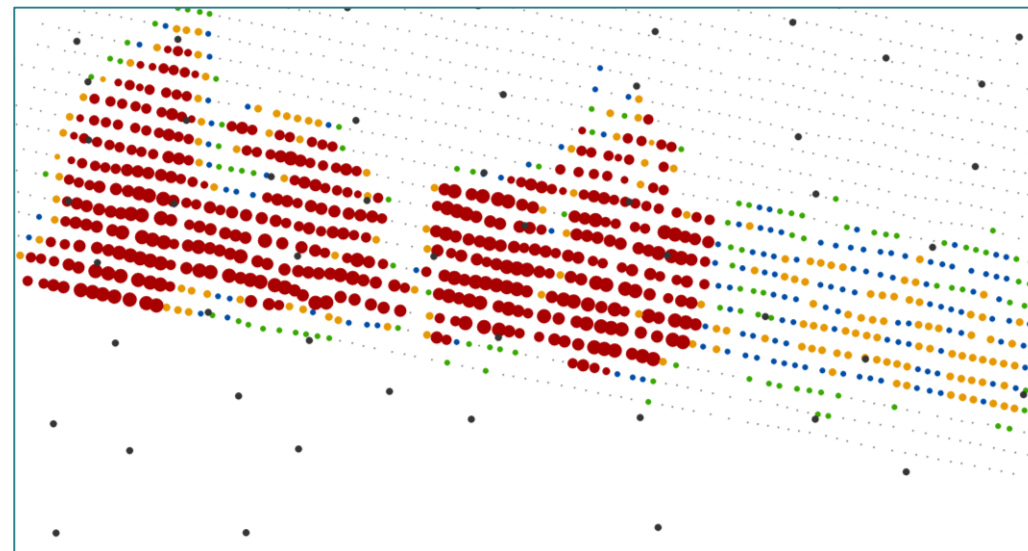
➡ ~~TT and ET implementation~~

✓ Modified TT and ET

✓ TT and ET limitation

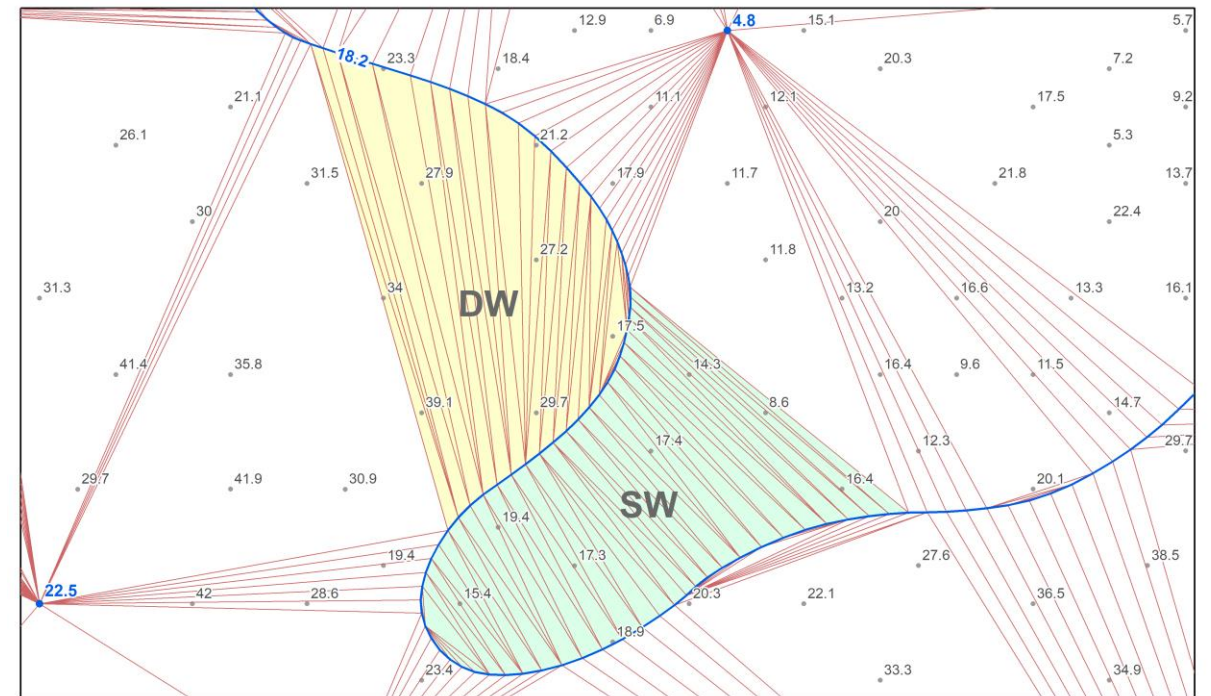
✓ Nautical Surface Test (ST)

R20 TT, ET, ST Toolset



FUTURE WORK / LIMITATIONS

- Vertical consistency
- Flat triangles (point-in-polygon test)
- Nautical surface reconstruction



THANK YOU!

