

# CENTER FOR COASTAL & OCEAN MAPPING NOAA-UNH JOINT HYDROGRAPHIC CENTER

## SEAFLOOR CHARACTERIZATION

### *Remotely Sensing the Composition of the Seafloor*

CENTER FOR COASTAL  
& OCEAN MAPPING  
NOAA-UNH JOINT  
HYDROGRAPHIC CENTER

University of  
New Hampshire  
Jere A. Chase  
Ocean Engineering Lab

24 Colovos Road  
Durham, NH 03824

603.862.3438 tel  
603.862.0839 fax

[www.ccom.unh.edu](http://www.ccom.unh.edu)

---

#### PROJECT CONTACT

Jonathan Beaudoin, Ph.D.  
Research Scientist

[jbeaudoin@ccom.unh.edu](mailto:jbeaudoin@ccom.unh.edu)

603.862.2487 tel  
603.862.0839 fax

---

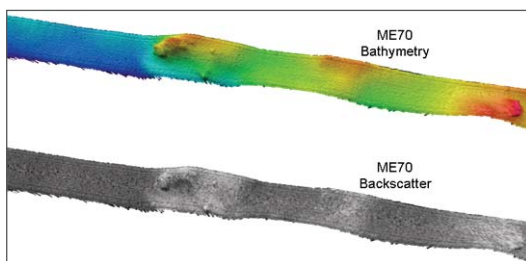
#### LEARN MORE

[http://ccom.unh.edu/theme/  
seafloor-characterization](http://ccom.unh.edu/theme/seafloor-characterization)

---

CCOM/JHC IS AN  
EDUCATION AND RESEARCH  
PARTNERSHIP AMONG  
NOAA, UNH, AND  
OCEAN INDUSTRY

Just as the center has been at the leading edge in developing new tools to create three-dimensional bathymetric seafloor maps, CCOM/JHC researchers are developing ways to extract the geological component from the acoustic “backscatter” signal to characterize the seafloor. By improving the ability to remotely sense seafloor composition—coarse or fine sand, mud, rock, etc.—survey ships will be able to quickly and accurately map a diversity of seafloor habitats.



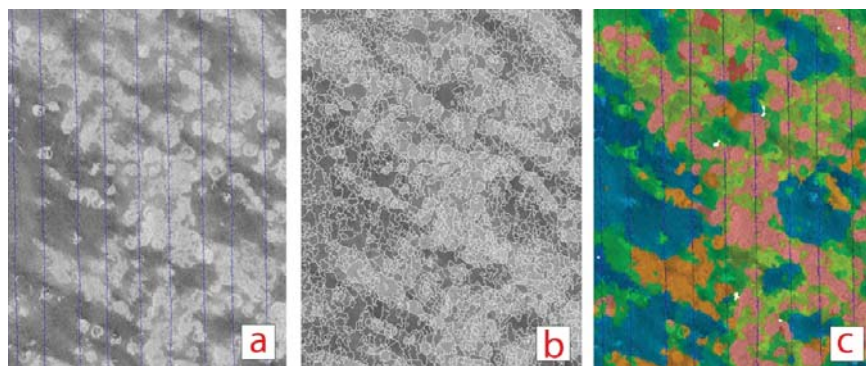
*Bathymetry and backscatter in the Shumagins (western Gulf of Alaska) showing rock outcroppings. Depths range from 80-120 m over the 6 km long transect. Data were collected using the ME70 fisheries multibeam echo-sounder, processed in custom MATLAB software, gridded and then plotted in Fledermaus.*

“This has been the holy grail for 25 years,” says research professor James Gardner.

“Currently, you have to stop the ship, take a sample, take a photograph, and piece it all together. Developing our ability to do this via remote sensing would vastly increase the area we could map from a habitat point of view.”

To that end, the center has a number of interconnected research programs dealing with a range of sensors (single beam, multibeam and sidescan sonars, lidar, video, etc.) and involving theoretical studies, the collection of remotely sensed data, and “ground-truth” samples. These efforts are particularly relevant for the increasingly important topic of fisheries habitat characterization, which is a one of the key goals of the Integrated Ocean and Coastal Mapping or “map once, use many times” approach to mapping the seafloor.

The center has developed a software package that has successfully extracted remotely sensed backscatter data from small areas of seafloor. Still under development, the package has been incorporated into standard software for



*In this image, a) shows original backscatter mosaic with ship tracks in blue; b) shows result of oversegmentation—the original mosaic is divided into small segments, each is considered to be acoustically homogeneous; and c) is the result of coalescence of segments into several themes, based on full amount of backscatter data available for each segment (as opposed to the partial data displayed in the mosaic) and proximity between the segments.*

offshore mapping and, as it continues to be refined, will be a boon not only for habitat mapping but ocean engineering projects—aquaculture, wind farms, deep-ocean structures—that require highly accurate seafloor characterization.

